



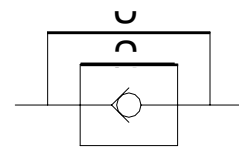
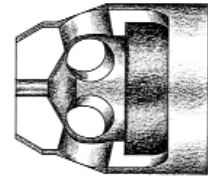
# KEPNER PRODUCTS COMPANY

ESTABLISHED IN 1948

TIPS #9

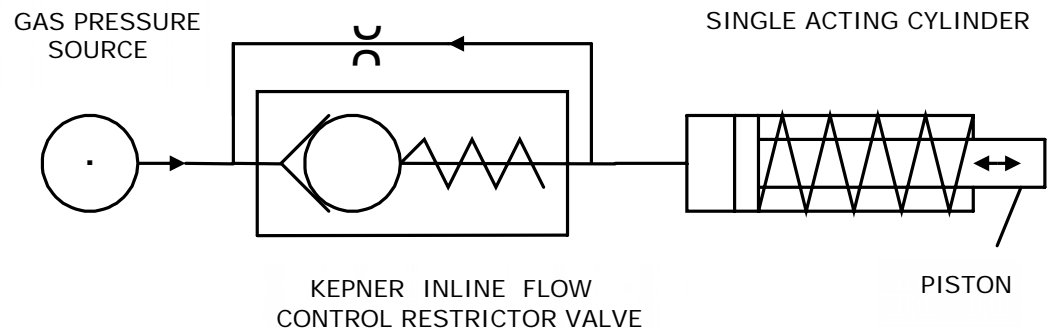
## Kep-O-seal® Fixed Orifice Flow Control Restrictor Valves

Fixed Orifice Flow Controls provide full flow in one direction and restricted (metered) flow in the reverse direction. They are standard Kep-O-seal Check Valves, or Kepsel Cartridge Valves, equipped with a calibrated orifice drilled through the valve poppet nose. Such valves are often used in charging lines for cylinders, containers or accumulators where the designer wishes to complete the charge as rapidly as possible and then bleed back the charged fluid at a pre-determined rate.



ANSI SYMBOL

### FLOW CONTROL RESTRICTOR VALVE APPLICATION



Differential gas pressure across the inline flow control restrictor valve causes gas to flow through the check valve portion of the valve causing the piston in the single acting cylinder to move to the right. As the pressure is reduced flow through the restrictor portion of the control valve continues allowing the piston in the cylinder to move to the left at a predetermined rate based on the size of the restrictor orifice and the piston spring force. The piston retracts, (moves to the left), until it returns to the original position.

Valve performance is dependent on proper selection, application, installation and maintenance. Consult Factory.

Kepner Products Company, Villa Park, IL 630.279.1550 E-mail: [kepner@kepner.com](mailto:kepner@kepner.com)